

N°	25-27-09
REV	0
DATE	27/11/2023

ACOMPLISHMENT: MANDATORY

1. **PURPOSE:** Detect corrosion and/ or cracks on FWD and AFT wing spar.
2. **BACKGROUND:**

Severe corrosión has been detected on PA-25, PA-25-235 and 260 airplane's FWD and AFT spars in routine inspections.



Figure 1

Also corrosión has been detected behind reinforcements P/N 60373-01/-02. as can be seen in figure 2.



Figure 2

3. APLICABILITY:

Models affected: PA-25, PA-25-235 y PA-25-260 S/N: ALL

4. COMPLIANCE TIME:

Initial action: 500 HS TSN or 5 years since new (whichever occurs first)

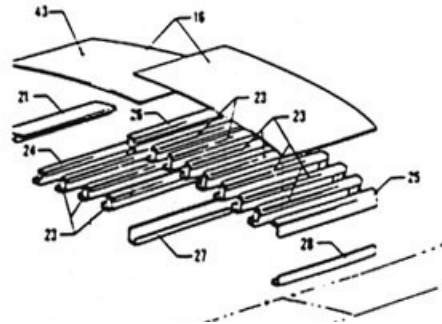
Repetitive action: 100 HS or 12 month (whichever occurs first)

5. ACTIONS:

5.1. Initial:

- a. Take out inspection cover from both semi wings intrados. See inspection covers distribution drawing. If it doesn't have installed some inspection covers indicated in Picture 3 y 4, install it according subject 6 "Inspection holes installation instruction (Picture 6)". Also install an inspection hole in front of fwd spar attachment, according to inspection holes distribution drawing (Picture 5)
- b. Inspect draing holes (washer P/N 80122-53 – 12 req) for correct position and obstruction
- c. Clean the área behind the wingwalk
- d. With help of a mirror and light, or with a borecope camera, Inspect both spars in root área and along winspan for corrosión and cracks, paying spetial atention to reinforcement P/N 60373-01/-02, union between spars with compression beams, with lift strut attachment and and with wing root attachments.
- e. If no corrosión or cracks are detected, protect wing to fuselage attachment, union between spars and compresión beams and unión between spars and lift strut atachment, with rust inhibitor LPS3 (***) and restore the airplane to its initial condition.
- f. If corrosión or cracks are detected,:
 - f.1. Wingwalk área: Uninstall wingwalk and cover at wingwalk intrados and perform a detailed inspection. First check if corrosión only affected J sections P/N 61228-00 y 61229-00 (ítems 27 y 28 fig 3 from IPC). In that case, replace J sections, protect wing to fuselage attachments with LPS3 (***) and restore the airplane to its initial condition

Nº	25-27-09
REV	0
DATE	27/11/2023



Picture 1

f.2. Wingwalk area: If corrosión affected to spars too

- i. Contact LAVIASA for reparation instructions and allowable corrosión limits.
- ii. If crack are detected, contact LAVIASA.

f.3. If corrosión or cracks are detected in áreas different from wing root or wingwalk área, Contact Laviasa.

f.4. Whether the corrosión was blended out or the spar was replaced, it has to be protected first with application with brush or inmersion bath (whichever is more apropiate) of Alodine 1200 (*) and then with wash primer paint. Protect reinforcement P/N 60373-01/-02, wing to fuselage attachment, union between spars and compresión beams and unión between spars and lift strut atachment with LPS3 (**) and restore the airplane to its initial condition

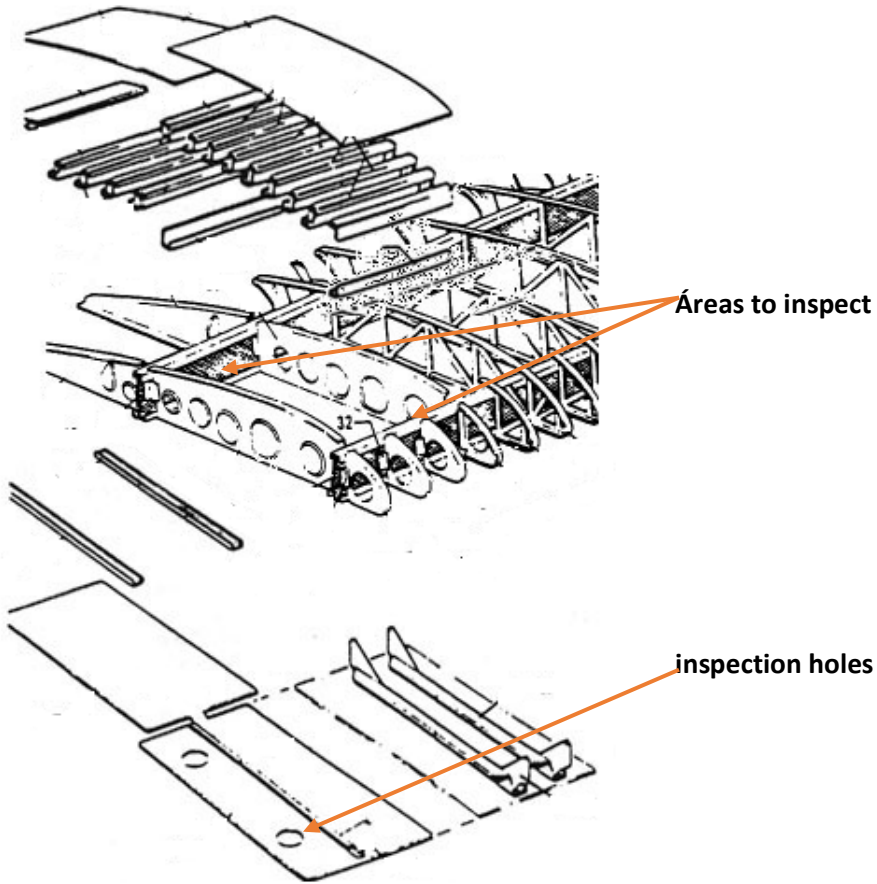
f.5. Install cover plates according picture 7

5.2.Repetitive action: same as initial action

(*) MIL-C-5541E Class 1A and 3 coatings, Methods A, B & C application.

() MIL-PRF-16173E G2**

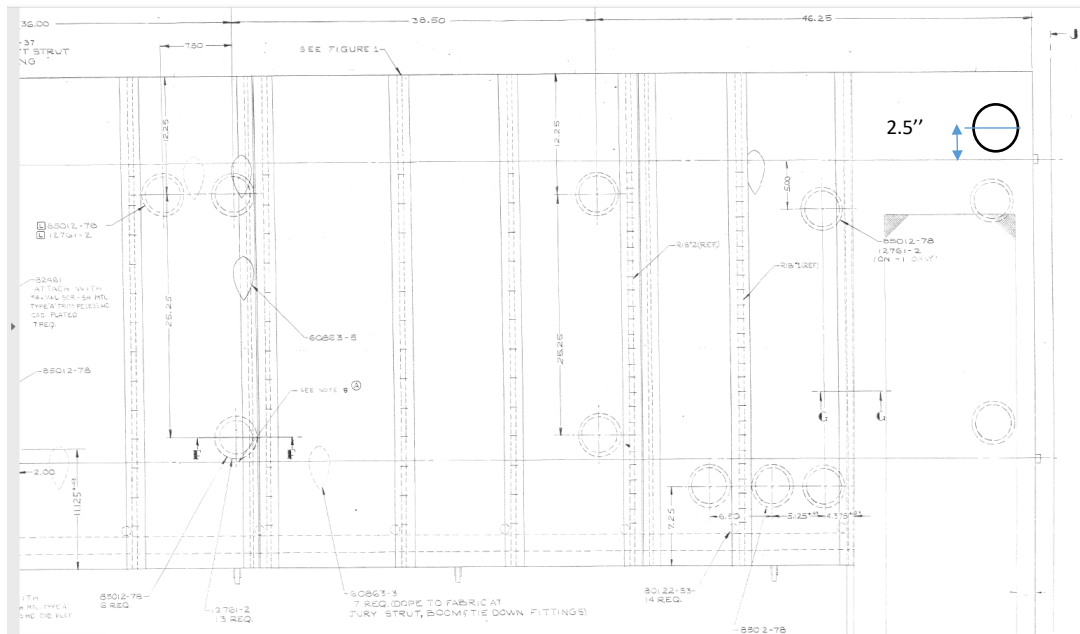
N°	25-27-09
REV	0
DATE	27/11/2023



Picture 2

N°	25-27-09
REV	0
DATE	27/11/2023

INSPECTION HOLES DISTRIBUTION



New
inspection
Hole ø 3.5"

Picture 5

6. INSPECTION HOLES INSTALLATION

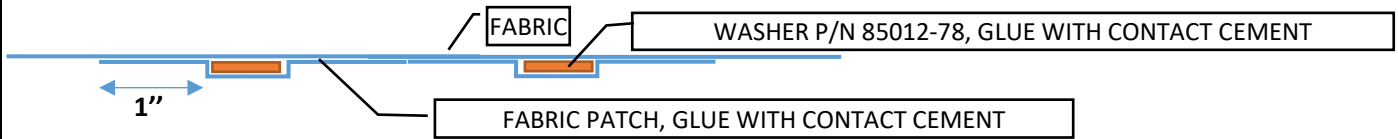
1. Mark and mask área to sand
2. Sand the pain in the área were the inspection hole Will be installed, with 240 grit water sandpaper, on fabric Surface at the wing intrados
3. Glue washer P/N 85012-78 with contact cement in the corresponding location.
4. Glue over the washer, with contact cement, a Ceconite 101 fabric patch.
5. Paint the área with poliuretanic paint.
6. With a cutter, cut the fabric in the interior of the washer, in order to open the inspection hole.
7. Install inspection cover P/N 12761-2
8. Reference: AC43-13-1b Chapter 2 Section 1 – Item 2-14

Parque Industrial Mendoza, Eje Norte, manzana 13 lote 3

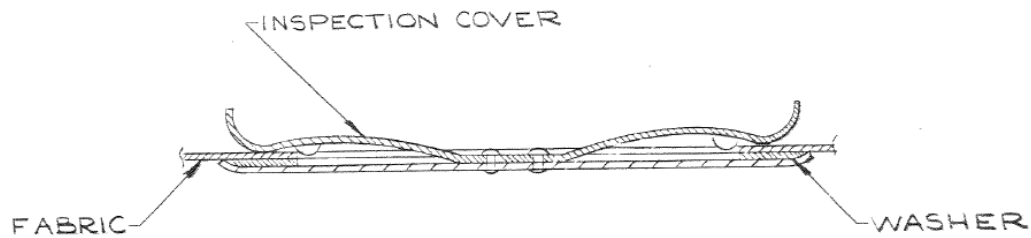
Las Heras, Mendoza – Argentina

Teléfono / Whatsapp: +54 9 2614 67-7682 - EMAIL: administracion@laviaargentina.com

N°	25-27-09
REV	0
DATE	27/11/2023



Picture 6



SECTION **F-F**
INSPECTION HOLE DETAIL
FULL SIZE

Picture 7

N°	25-27-09
REV	0
DATE	27/11/2023

7. **EXECUTION TIME: 8 hs**
8. **AIRPLANE DETENTION TIME: 8 hs**
9. **TOOLS: Mirror, Flashlight, Cutter**
10. **MANPOWER: 1 Mecchanic**
11. **WEIGHT AND BALANCE: NOT AFFECTED**
12. **MATERIALS REQUIRED: (in case of findings)**
 1. Washer P/N 85012-78
 2. Inspection Cover P/N 12761-2
 3. Section wingwalk J 61228-00
 4. Section wingwalk J 61229-00
 5. Front Spar 96006-0 / -1; 64055-06 / -07
 6. Rear Spar 96006-0 / -1; 64056-02 / -03